



IP-S3 HD1

3D Mobile Mapping System

- Lightweight / Compact
- High-density point cloud
- Image overlays
- Street views
- Easy feature extraction



GLS-2200

Multi-Functional 3D Laser Scanner

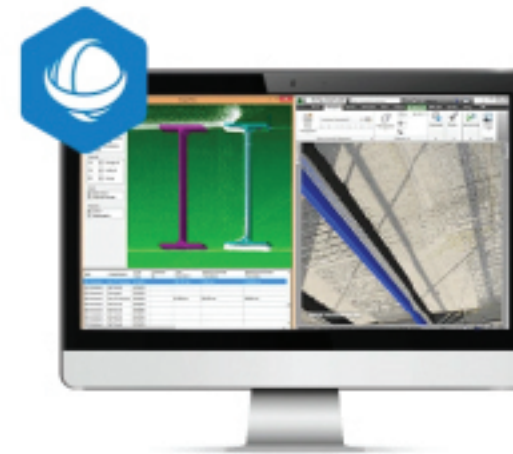
- Range 500m, 350m, 130m
- Accuracy 6"
- Camera Internal & External
- Auto-height measurement
- Field Registration



GTL-1200

Scanning Robotic Total Station

- 75% Reduced Workflow
- Dual use-layout / Scan
- Construction Verification
- 70M Range



Topcon Clear Edge

3D Software

- Edgewise
- Verity
- Rithm
- Scan to Bim

ATMOS



Atmos Drone

Aerial Mapping System

- Setup in 5 Minutes
- PPK Accuracy
- Max Flight Time 50 Min
- Fully Automatic Flight Mode
- 61MP High resolution camera



LN-150

3D Layout Navigator

- Range – 130m
- Accuracy – 3mm
- Speedy stake out
- Simple operation
- Self-leveling



Delta Monitoring

Deformation Monitoring System

- High-flexibility for motorized total station & environmental sensor data
- Integrated communication
- Network adjustment & analysis
- Reporting, visualization & alarm features



MS-05AXII

Ultra-high Precision Auto-tracking

- Angular accuracy option 0.5 / 1"
- Reliable distance accuracy of 0.5mm
- Least count 0.01mm
- Automated matrix detection
- Enforced durability for long term deformation and monitoring



NET-G5

GNSS Receiver

- Entire GNSS spectrum
- 452-Universal channel vanguard technology
- Bluetooth & Wi-Fi connectivity
- Integrated web interface
- 32GB internal memory



MR-2

Modular GNSS Receiver

- 226- Universal channel vanguard technology
- Simultaneous RTK & heading
- Serial, USB, Can & Ethernet
- 8GB internal memory



GM-50/100 Series Reflectorless Total Station

- N/P Range 500m/800m
- Accuracy 2", 5"
- IP 66
- Operating Temp -20c to 60c



OS-200 Series On-Board Total Station

- N/P Range 1000m*
- Accuracy 1", 2", 3", 5"
- IP IP65
- Operating Temp -20c to 60c



GT-600/1200 Series Robotic Total Station

- N/P Range 1000m*
- Accuracy 1", 2", 3"
- IP 66
- Operating Temp -20c to 50c



HiPer HR GNSS Receiver

- Rugged, waterproof IP67 environmental design
- Cellular, LongLink and Radio communications all integrated
- 452 Universal Tracking channels
- Unique 9-axis TILT™ compensation
- Internal Wi-Fi and multi-spectrum Bluetooth
- Removable, hot-swappable batteries



Hiper-VR Versatile GNSS Receiver

- Channel 226(UTC™)
- Signal All Signals
- Accuracy H:5mm+0.5ppm,
V:10mm+0.8ppm
- Tilt Available
- Range 5-7Km, 15Km



DL-500 (DL-501, DL-502, DL-503) Electronic Digital Level

- Accuracy Upto 0.2mm
- Magnification Upto 32x
- Measuring range Upto 100m
- Least count Upto 0.01mm



Vivax Metrotech vScan Utility Avoidance Tool

- Self-test/calibration verification – confirms 100% locate functionality
- Together with the dual frequency transmitter, data logging, optional metal manhole cover detector, GPS, and Bluetooth



Vivax Metrotech vLoc3-Pro Utility-Locators

- Precision 3D line Locator
- 4.3" Color LCD
- 8 Passive Locate Modes
- Fault Find Mode
- Signal Direction
- 98Hz-200kHz



DUBAI:

P.O.Box: 1600

Tel.: (04) 333 2985

Fax: (04) 333 2981

ABU DHABI:

P.O.Box: 2752

Tel.: (02) 552 0007

Fax: (04) 333 2985



aft_uae



alfajerTradingllc



info@fajerest.ae



www.fajerest.com

