



International Architecture Platform of Australia



# IAPA DESIGN

IAPA DESIGN is an international design firm established in 1998. The firm is led by an experienced team of architects from Australia and around the world. IAPA's main office is located in Sydney, Australia, with an operational office in Guangzhou, China. IAPA is well practiced in a wide range of design disciplines, including urban design, architectural, landscape, and interior design.

IAPA has attracted exceptional design talent from around the world thanks to its modern cutting-edge international design philosophy and excellent reputation within the industry. Our unique mix of talent is what enables IAPA to design with international expertise and local sensibility. These exceptional designers from Australia, Europe, Asia, the Americas, and the Middle East form IAPA's distinctive, multidisciplinary, and multicultural design team.

With outstanding creative capabilities and over 20 years of accumulated experience, IAPA have successfully completed hundreds of exceptional projects. These projects encompass a wide range of disciplines, including comprehensive planning and design for urban core areas, waterfront districts, urban parks, scenic areas, residential communities, heritage preservation, and creative industrial parks. IAPA have also undertaken various types of public projects such as commercial complexes, hotels, libraries, museums, exhibition halls, theaters, visitor centers, science centers, cultural centers, underground spaces, as well as different types of landscape and interior design project.

IAPA has been honored with numerous international awards for its outstanding design quality. These accolades include selected as a finalist for the World Architecture Festival, winning the Best of Best Award of Iconic Awards, the Gold Award of A' Design Awards, the German Design Award (GDA), the International Architecture Awards, the honorable mention of ARCASIA Architecture Awards, the RIBA Competition Winning Award, the Merit Award of Gold Nugget Awards, the BLT Design Awards winner, the Silver Award of A&D Design Awards, the LOOP Design Awards, the Paris DNA Design Awards, the Architecture Master Prize Awards, the Gold Winner of MUSE Design Awards, the Global Design News – Future Architecture Award, the AHLA Asian Landscape Award, the ELA International Landscape Award, the China Yuanye Cup Urban Design Award, and the Guangzhou Excellent Engineering Design First Prize, among others.

## **IAPA** SINCE 1998 **URBAN PLANNING** **ARCHITECTURE** **LANDSCAPE DESIGN** **INTERIOR DESIGN** **HERITAGE PRESERVATION**

**Sydney, Australia**

6 Old Sydney Road, Seaforth NSW 2092, Australia

**GuangZhou, China**

6th Floor, Block A, Poly Zhongyu Plaza, No. 626 Tianhe North Road,  
Guangzhou City, China

**E-MAIL: [Info@iapa.net.au](mailto:Info@iapa.net.au)**

**NET :[www.iapa.net.au](http://www.iapa.net.au)**

# Urban Planning & Heritage conservation



# URBAN DESIGN OF SUPER CITY PORTAL IN SHENZHEN NORTH STATION

I A P A P T Y L T D

When we started thinking about how to create a world-class landmark new city, a Chinese landscape painting from 600 years ago brought us the initial inspiration. The painting features towering mountains and towering rock peaks, with concise and powerful forms that embody profound traditional Chinese cultural spirit, as well as some modern urban design concepts. In the process of shaping space, we draw inspiration from the concepts of Chinese landscape painting, emphasizing the artistic conception of blending emotions and scenes, and creating a poetic experience that can be explored and traversed.

Project owner: Shenzhen North Station Business Center Planning and Construction Command Office  
Project scale: The total land area is 20.5 hectares, with a building area of 1.3 million m<sup>2</sup>;  
Project location: Shenzhen, Guangdong province, China  
Project status : Complete project design







# URBAN PLANNING OF DUBAI 2100 — DUBAI HORIZON

I A P A P T Y L T D

FIRST PLACE IN INTERNATIONAL DESIGN COMPETITION

Islamic culture is the key that unlocks the gateway to the Middle East and the window to Islamic civilization. As an important architectural symbol of Islamic culture, mosques embody the emotions, wisdom, history, and culture of Muslims. Our design was inspired by one of the most fundamental features of a mosque: the minaret. The overall concept of Dubai Horizon can be divided into two main areas: the Dome City and the Green Ark.

Project Scale: The planned area is approximately 4.8 skm<sup>2</sup>  
Project Location: Dubai  
Project status : Design completed









# THE “NEW KHARKHORUM CITY” OF MONGOLIA MASTER PLANNING

I A P A P T Y L T D

WINNER'S AWARD IN THE INTERNATIONAL COMPETITION

The era of the traditional metropolis, with a central business core surrounded by rings of decreasing density, may no longer be sustainable. Our masterplan for Kharkhorin considers not only the city itself but the balance of the whole ecosystem. We studied advanced city models of polycentric

Project Organizer: The Urban Planning Administration Of “New Kharkhorum” City  
Project scale: Site area is 193 km<sup>2</sup>  
Project location: Mongolia  
Project status : Design completed





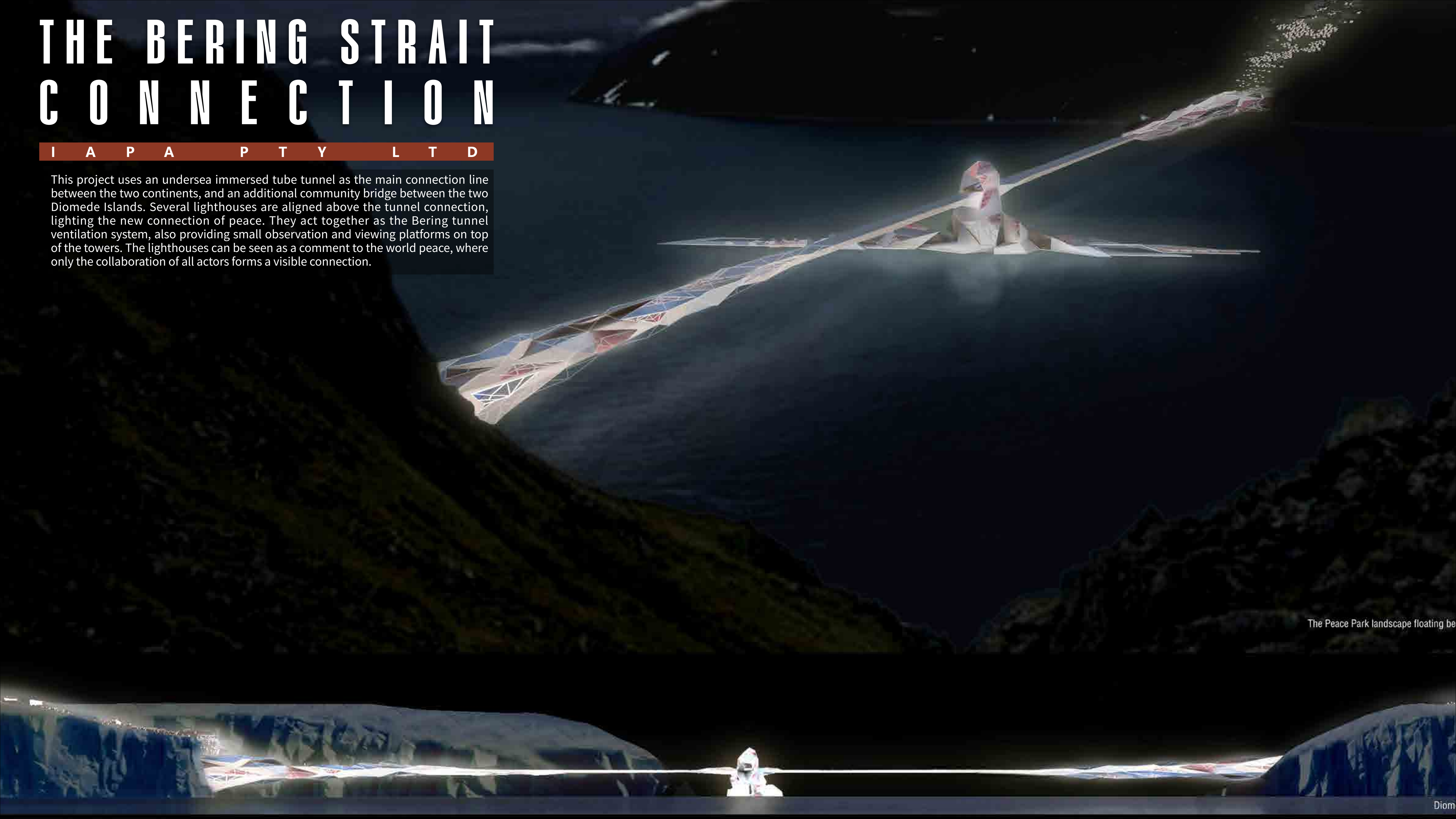




# THE BERING STRAIT CONNECTION

I A P A P T Y L T D

This project uses an undersea immersed tube tunnel as the main connection line between the two continents, and an additional community bridge between the two Diomedede Islands. Several lighthouses are aligned above the tunnel connection, lighting the new connection of peace. They act together as the Bering tunnel ventilation system, also providing small observation and viewing platforms on top of the towers. The lighthouses can be seen as a comment to the world peace, where only the collaboration of all actors forms a visible connection.



The Peace Park landscape floating be



# THE NEW BASRA WATERFRONT

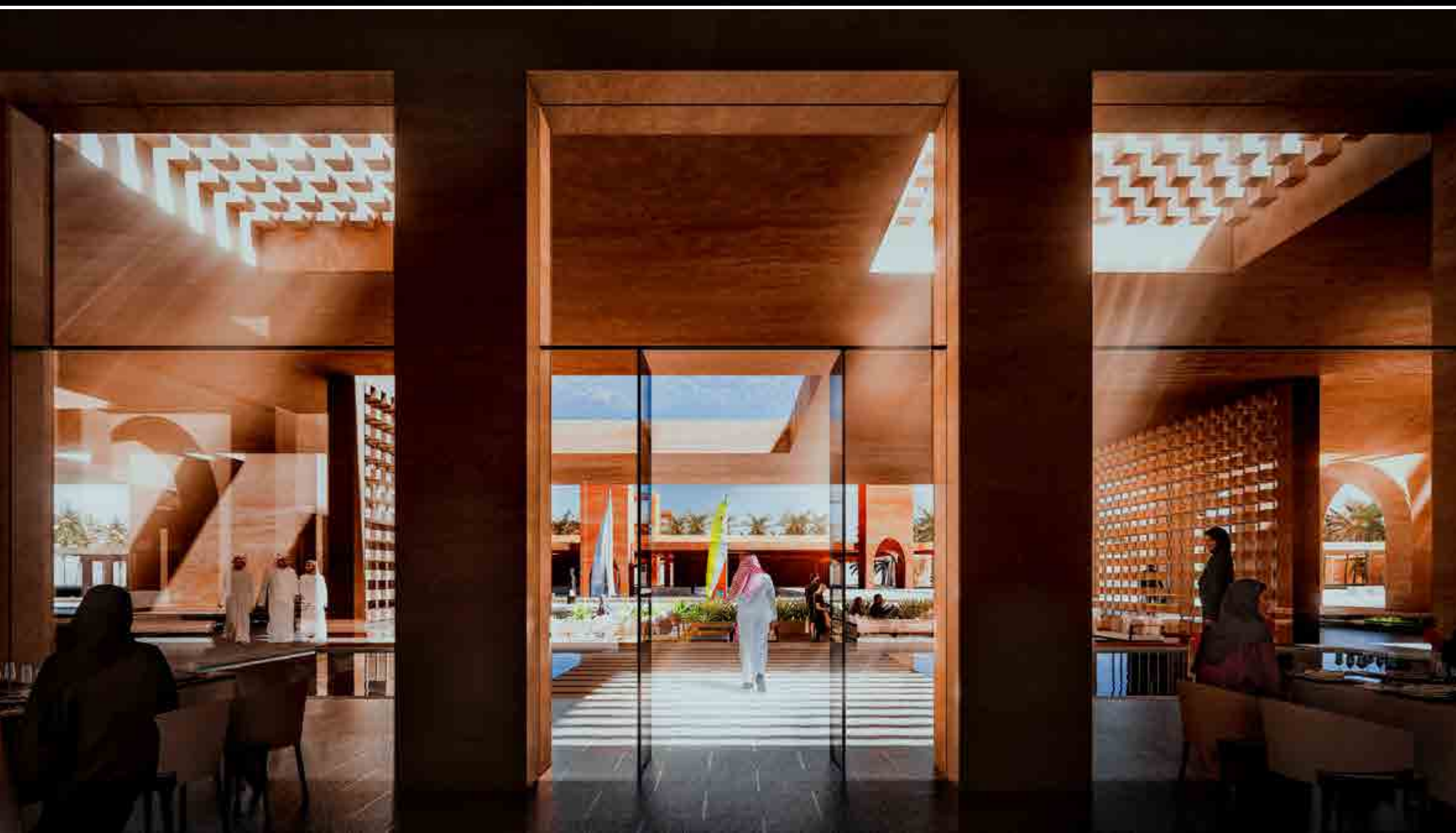
I A P A P T Y L T D

SECOND PLACE IN INTERNATIONAL DESIGN COMPETITION

When we started thinking about how to create a world-class landmark new city, a Chinese landscape painting from 600 years ago brought us the initial inspiration. The painting features towering mountains and towering rock peaks, with concise and powerful forms that embody profound traditional Chinese cultural spirit, as well as some modern urban design concepts. In the process of shaping space, we draw inspiration from the concepts of Chinese landscape painting, emphasizing the artistic conception of blending emotions and scenes, and creating a poetic experience that can be explored and traversed.

Project Scale: The total land area is approximately 100,000 sqm.  
Project Location: Dakar Island, Basra, Iraq.  
Project status : Design completed







# GOLDEN SAND WATERFRONT

I A P A P T Y L T D

FINALIST IN THE INTERNATIONAL DESIGN COMPETITION

When we started thinking about how to create a world-class landmark new city, a Chinese landscape painting from 600 years ago brought us the initial inspiration. The painting features towering mountains and towering rock peaks, with concise and powerful forms that embody profound traditional Chinese cultural spirit, as well as some modern urban design concepts. In the process of shaping space, we draw inspiration from the concepts of Chinese landscape painting, emphasizing the artistic conception of blending emotions and scenes, and creating a poetic experience that can be explored and traversed.

Project scale: The planned area is approximately 212600 sqm.  
Project location: Italy  
Design Status : Design completed







# URBAN DESIGN OF THE STARTING AREA OF MINGZHU BAY IN NANSHA GUANGZHOU

I A P A P T Y L T D

WINNER'S AWARD IN THE INTERNATIONAL COMPETITION

When we started thinking about how to create a world-class landmark new city, a Chinese landscape painting from 600 years ago brought us the initial inspiration. The painting features towering mountains and towering rock peaks, with concise and powerful forms that embody profound traditional Chinese cultural spirit, as well as some modern urban design concepts. In the process of shaping space, we draw inspiration from the concepts of Chinese landscape painting, emphasizing the artistic conception of blending emotions and scenes, and creating a poetic experience that can be explored and traversed.

Project owner: Guangzhou Nansha Pearl Bay Development and Construction Headquarters  
Project scale: The land area is about 300 hectares, of which the park part is about 120 hectares  
Project location: Guangzhou, Guangdong province, China  
Project status: Design completed, under construction





# URBAN DESIGN OF GD-HK-MO INNOBATION COOPERATION DEMONSTRATION ZONE

I A P A P T Y L T D

The plan adheres to the design principles of "linking the Bay Area, cooperative interaction," with the "super ecological corridor" as the backbone, integrating three major design strategies: "linking with banyan vines, super-shared settlements, and a boundless future." It connects the five major areas of Digital Growth Valley, Intelligent Manufacturing Park, Ocean Science and Technology Bay, Innovative Future City, and Carbon Sink Eco-Anchorage. It creates a "blended and shared scientific and technological innovation cluster" in the vast sands, explores a "resilient growth model of carbon-neutral ecology," and realizes a "multidimensional and vibrant boundless future" for the Guangdong-Hong Kong-Macao Greater Bay Area.

Project owner: Guangzhou Nansha Development Zone Planning and Research Center  
Project scale: The overall conceptual design area is 71 km<sup>2</sup> and the detailed design area is 8 km<sup>2</sup>  
Project location: Guangzhou, Guangdong province, China  
Project status : Complete project design







# CONCEPTUAL PLANNING OF SANYA SOUTH SEA

I A P A P T Y L T D

The overall design concept includes three aspects: planning from six aspects, analysis of the current advantageous and problematic areas within the district structure, the interrelationship between the advantageous and problematic areas within the planning area and the overall development of Panyu city, and the combination of contemporary international waterfront design ideas and team design intentions.

Project Owner: Hainan Sunshine One Hundred Real Estate Development Co., Ltd  
Project location: Sanya City, China  
Project scale: Total land area of approximately 11 hectares  
Project status: Design completed





# TANG XI'AN DAMING PALACE HERITAGE PARK

I A P A P T Y L T D

WINNER'S AWARD IN THE INTERNATIONAL COMPETITION

2014 Guan Shanyue Art Museum permanent collection

2013 Selected for the first China Design Award

When we started thinking about how to create a world-class landmark new city, a Chinese landscape painting from 600 years ago brought us the initial inspiration. The painting features towering mountains and towering rock peaks, with concise and powerful forms that embody profound traditional Chinese cultural spirit, as well as some modern urban design concepts. In the process of shaping space, we draw inspiration from the concepts of Chinese landscape painting, emphasizing the artistic conception of blending emotions and scenes, and creating a poetic experience that can be explored and traversed.

Project Owner: Xi'an Qujiang Daming Palace Investment (Group) Co., Ltd  
Project Scale: Total planned area of approximately 3.6 km<sup>2</sup>.  
Project Location: Xi'an, Shaanxi province, China  
Project status : Completion of construction







# WENZHOU SANYANG URBAN WETLAND PARK

I A P A P T Y L T D

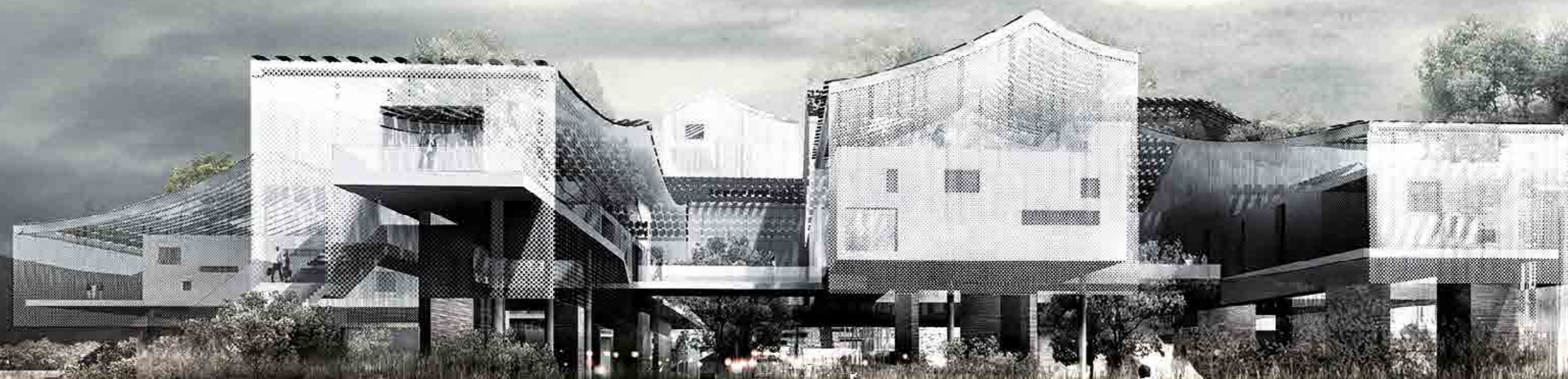
WINNER'S AWARD IN THE INTERNATIONAL COMPETITION

2020 A' Design Awards Bronze Award

2019 World Architecture Festival (WAF) Finalist

2019 ICONIC Design Awards Selection

When we started thinking about how to create a world-class landmark new city, a Chinese landscape painting from 600 years ago brought us the initial inspiration. The painting features towering mountains and towering rock peaks, with concise and powerful forms that embody profound traditional Chinese cultural spirit, as well as some modern urban design concepts. In the process of shaping space, we draw inspiration from the concepts of Chinese landscape painting, emphasizing the artistic conception of blending emotions and scenes, and creating a poetic experience that can be explored and traversed.



Project owner: Wenzhou Ecological Park Management Committee  
Project scale : The total area is about 10.67 km<sup>2</sup>  
Project location: Wenzhou, Zhejiang, China  
Project Status : Complete project design







# JIN DYNASTY CAPITAL HERITAGE PARK IN BEIJING

I A P A P T Y L T D

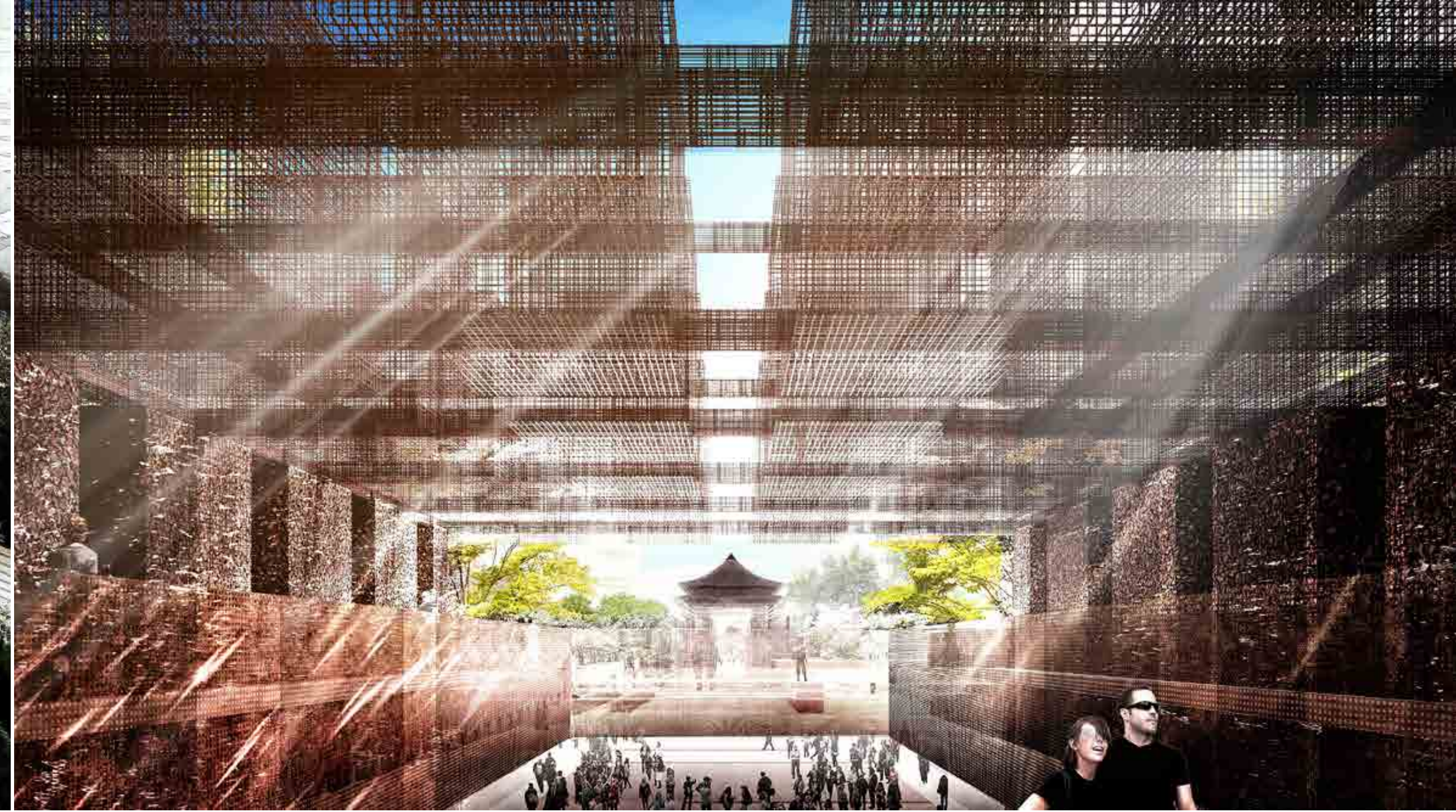
WINNER'S AWARD IN THE INTERNATIONAL COMPETITION

2022 The Yuanye Cup Urban Design Gold Award

Jin Dynasty Capital is the beginning of Beijing's establishment. The three remaining ruins of the southern and western walls of the capital city are important objects for studying the historical and urban changes of Beijing. The site of this case is located in the core area of Lize Financial and Business District. Combining the regional spatial structure of "one center, three belts, and multiple points" in the upper level planning, linking the surrounding areas and even the existing historical and cultural relics in Beijing, connecting the urban ecological green network, establishing a historical, modern, and future interactive experience tourism system, promoting the capital to achieve full coverage and a more complete overall protection and display system for the historical and cultural cities of the Five Dynasties, and making the Jin Dynasty Capital Site Park the beginning of the establishment of the Pan Beijing Site Park system.

Project owner: Beijing Lize Financial and Business District Management Committee  
Project scale: Total area of approximately 15 hectares  
Project location: Beijing, China  
Project status : Complete project design









# SHAOHUA MOUNTAIN NATIONAL FOREST PARK

I A P A P T Y L T D

Shaohua Mount is formed by the compression, folding, and fracturing of metamorphic rocks and granite, resulting in its majestic terrain, exposed rocks, undulating peaks, and deep valleys. The plan aims to analyze and distill the landscape features of "peculiar, challenging, dangerous, and precipitous" and truly showcase them through site design. The project strives to enhance the overall sense of the scenic area through the elevation of spatial forms. Particularly noteworthy is the emphasis on elevating the node spaces, where creating a sense of artistic conception becomes especially crucial while maintaining control over the scale. Based on the site conditions, the project introduces the concept of "nine constructions and eighteen dangers," closely centered around the features of "peculiar, challenging, dangerous, and precipitous."

Project owner: Shaanxi Shaohuashan Tourism Development Co., Ltd  
Project scale: Planned area of 3.6 skm2  
Project location: Weinan, Shanxi province, China  
Project Status: Completed construction







**THANK YOU**



W E B S I T E : W W W . I A P A . N E T . A U