



International Architecture Platform of Australia



IAPA DESIGN

IAPA DESIGN is an international design firm established in 1998. The firm is led by an experienced team of architects from Australia and around the world. IAPA's main office is located in Sydney, Australia, with an operational office in Guangzhou, China. IAPA is well practiced in a wide range of design disciplines, including urban design, architectural, landscape, and interior design.

IAPA has attracted exceptional design talent from around the world thanks to its modern cutting-edge international design philosophy and excellent reputation within the industry. Our unique mix of talent is what enables IAPA to design with international expertise and local sensibility. These exceptional designers from Australia, Europe, Asia, the Americas, and the Middle East form IAPA's distinctive, multidisciplinary, and multicultural design team.

With outstanding creative capabilities and over 20 years of accumulated experience, IAPA have successfully completed hundreds of exceptional projects. These projects encompass a wide range of disciplines, including comprehensive planning and design for urban core areas, waterfront districts, urban parks, scenic areas, residential communities, heritage preservation, and creative industrial parks. IAPA have also undertaken various types of public projects such as commercial complexes, hotels, libraries, museums, exhibition halls, theaters, visitor centers, science centers, cultural centers, underground spaces, as well as different types of landscape and interior design project.

IAPA has been honored with numerous international awards for its outstanding design quality. These accolades include selected as a finalist for the World Architecture Festival, winning the Best of Best Award of Iconic Awards, the Gold Award of A' Design Awards, the German Design Award (GDA), the International Architecture Awards, the honorable mention of ARCASIA Architecture Awards, the RIBA Competition Winning Award, the Merit Award of Gold Nugget Awards, the BLT Design Awards winner, the Silver Award of A&D Design Awards, the LOOP Design Awards, the Paris DNA Design Awards, the Architecture Master Prize Awards, the Gold Winner of MUSE Design Awards, the Global Design News – Future Architecture Award, the AHLA Asian Landscape Award, the ELA International Landscape Award, the China Yuanye Cup Urban Design Award, and the Guangzhou Excellent Engineering Design First Prize, among others.

IAPA SINCE 1998 **URBAN PLANNING** **ARCHITECTURE** **LANDSCAPE DESIGN** **INTERIOR DESIGN** **HERITAGE PRESERVATION**

Sydney, Australia

6 Old Sydney Road, Seaforth NSW 2092, Australia

GuangZhou, China

6th Floor, Block A, Poly Zhongyu Plaza, No. 626 Tianhe North Road,
Guangzhou City, China

E-MAIL: Info@iapa.net.au

NET :www.iapa.net.au

Landscape & Interior Design

POLY JIANGMEN YUNSHANGXITANG SALES CENTER

I A P A P T Y L T D

2019 ICONIC AWARDS WINNER

2019 Finalist for the World Architecture Festival

2023 YUANYE Awards International Competition Annual Award

The Poly Yunshang Xitang project is a key initiative where IAPA has been involved in the design process for Poly Group since 2017, covering planning, landscape, architecture, and interior design. As the launch display area for the entire real estate project, we aim to showcase a lifestyle that embodies a return to nature for future residents—a genuine way of living.

We also hope that our design will inspire the commodified living environments in contemporary China. This attempt to combine commercial operations with a healthy lifestyle provides continuous motivation to invigorate the community.

Project owner: Jiangmen Yinkui Golf Co., Ltd. (Poly Group)

Project scale: Interior Design Area 1,025 m²

Project location: Jiangmen, Guangdong province, China

Project Status : Completed construction.





POLY HEYUE RIVERSIDE LANDSCAPE DESIGN

I A P A P T Y L T D

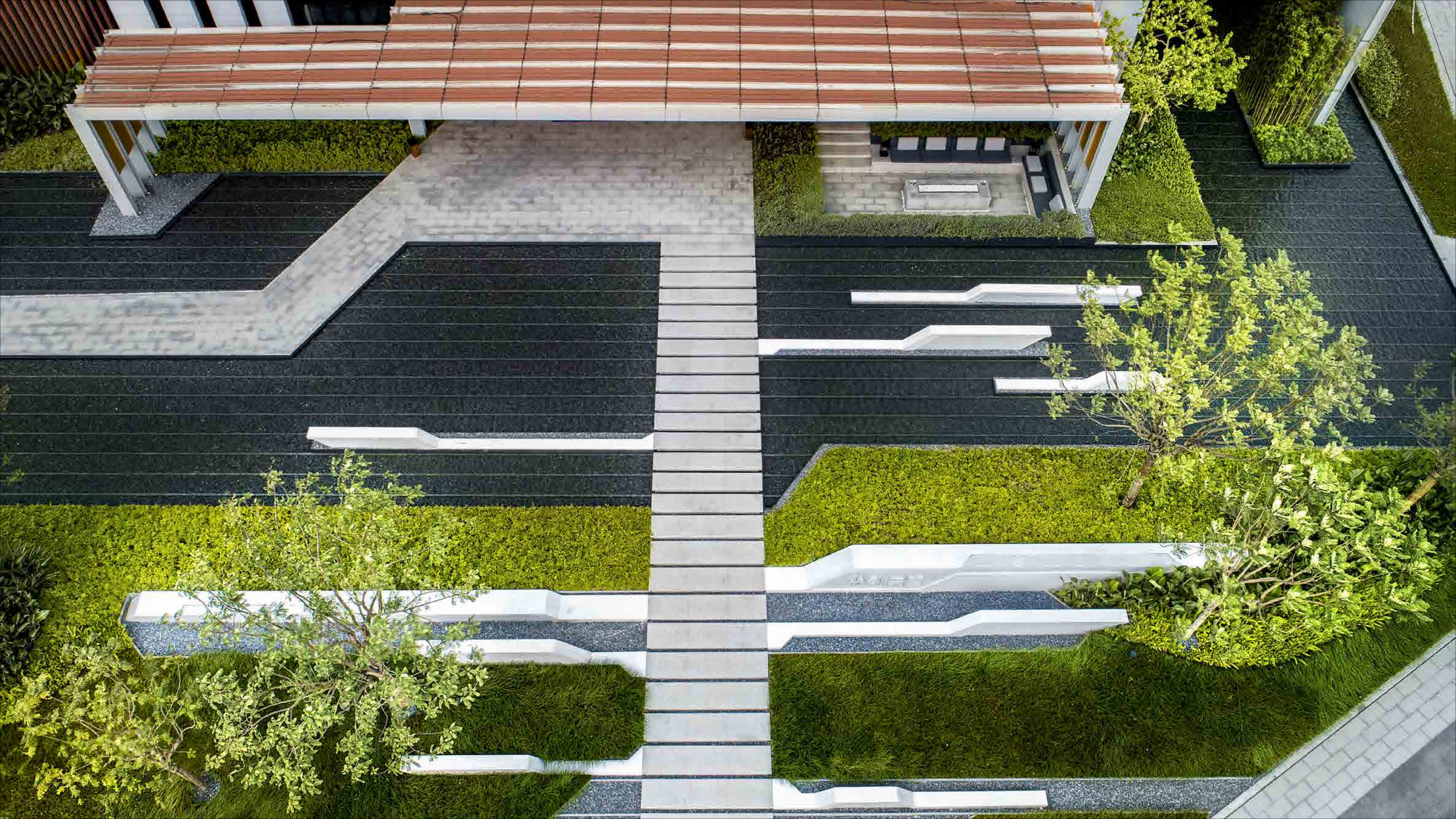
2020 Silver Award of A'DESIGN AWARDS

2020 Selection for ICONIC AWARDS

The project is positioned as a high-end luxury residence in Foshan, part of the Poly Tianzi series. Located in the suburban area of Foshan, it boasts beautiful scenery and well-equipped parks. The project covers an area of approximately 85,000 m². IAPA has been involved in the entire process, from the design of the display area to the overall landscape plan for the larger area, overseeing and controlling the implementation.

The design aims to create a sense of transition from the city back to nature. The entrance area features a tree-lined passage and natural scene shaping, creating a unique natural homecoming ceremony. Within the community, high-quality tree cover responds to the local hot climate, providing a continuous and comfortable walking experience for the community environment.

Project owner: Foshan Zhenghong Real Estate Co., Ltd. (Poly Group)
Project scale: Landscape Design Area Approximately 85,000 m²
Project location: Foshan, Guangdong province, China
Project Status : Completed construction.



POLY CLOUD CITY LANDSCAPE DESIGN

I A P A P T Y L T D

2023 YUANYE Awards International Competition Silver Award

2022 The LOOP Design Awards

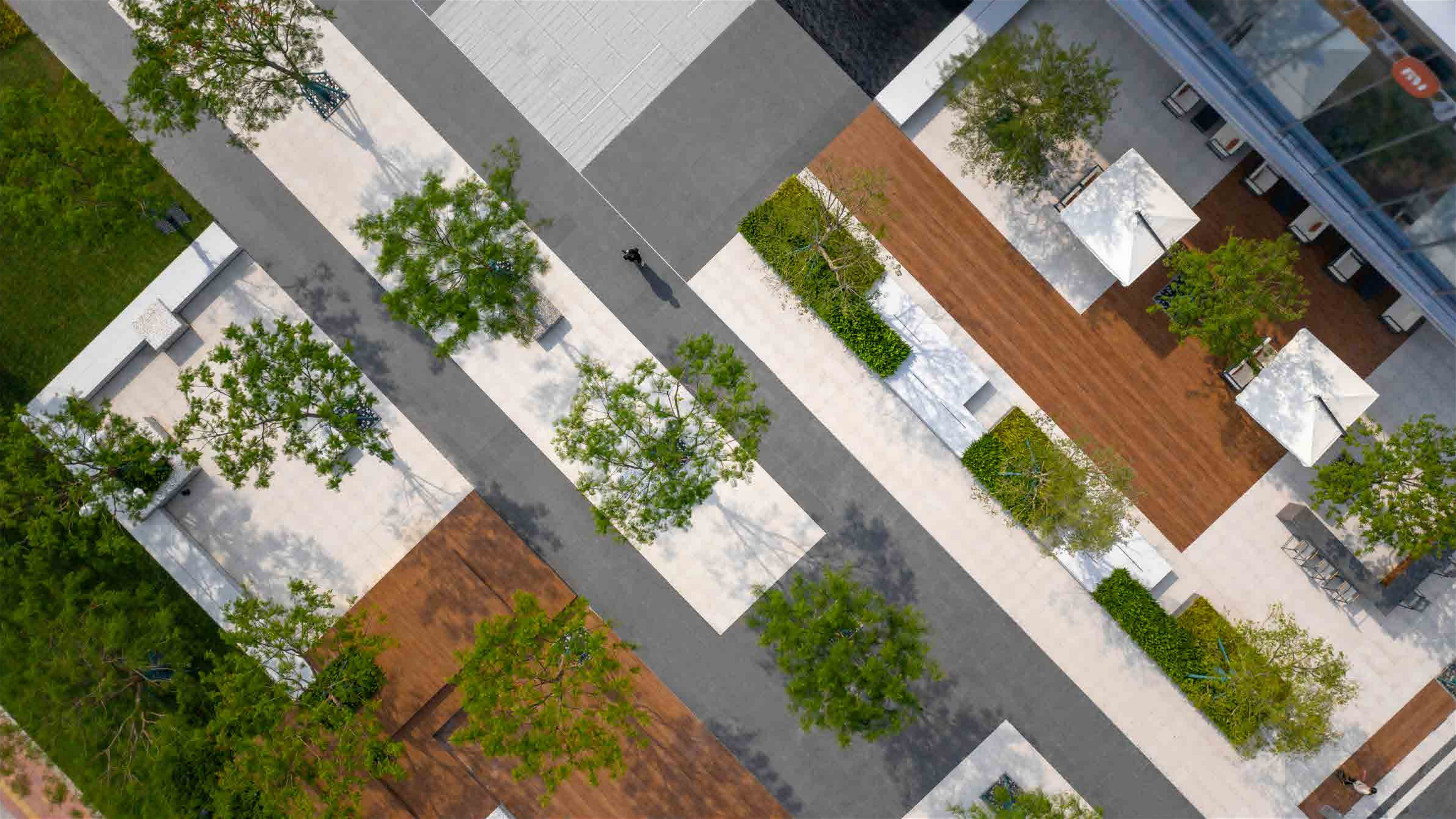
2022 ELA International Landscape Awards Silver Award

2022 Muse Design Awards Gold Award

The project is the first affordable housing product by Poly in the Xingtan area. Cloud City Garden, as a new development in the old city district, aims to create a popular project with a sense of new life, vitality, and vibrancy. The project covers an area of approximately 100,000 square meters. IAPA will be responsible for the overall landscape design, from the showcase area to the entire district, as well as the implementation and construction supervision, providing end-to-end services.

The design aims to create a warm, emotional, and vibrant new community environment for the target group of affordable housing. Through modern design language and human-centered details, a series of shared community amenities will be created, offering a range of spaces that foster a sense of community and enhance the overall living experience. The design will focus on creating a welcoming and lively atmosphere, ensuring that the residents feel a sense of belonging and enjoy a fulfilling lifestyle within the community.

Project owner: Foshan Baojing Real Estate Co., LTD
Project scale: Landscape design area of about 100,000 sqm
Project location: Foshan, Guangdong province, China
Project Status : Completed construction.



MIDEA DONGYUE BAY LANDSCAPE DESIGN

I A P A P T Y L T D

2022 ELA International Landscape Award Silver Award

2022 MUSE Design Award Gold Award

2021 AHLA Awards Excellence Award

When we started thinking about how to create a world-class landmark new city, a Chinese landscape painting from 600 years ago brought us the initial inspiration. The painting features towering mountains and towering rock peaks, with concise and powerful forms that embody profound traditional Chinese cultural spirit, as well as some modern urban design concepts. In the process of shaping space, we draw inspiration from the concepts of Chinese landscape painting, emphasizing the artistic conception of blending emotions and scenes, and creating a poetic experience that can be explored and traversed.

Project owner: Meijing Real Estate Development Co., Ltd. (Midea Group)
Project scale: Landscape design area of approximately 50000 sqm
Project location: Foshan, Guangdong province, China
Project Status : Completed construction.



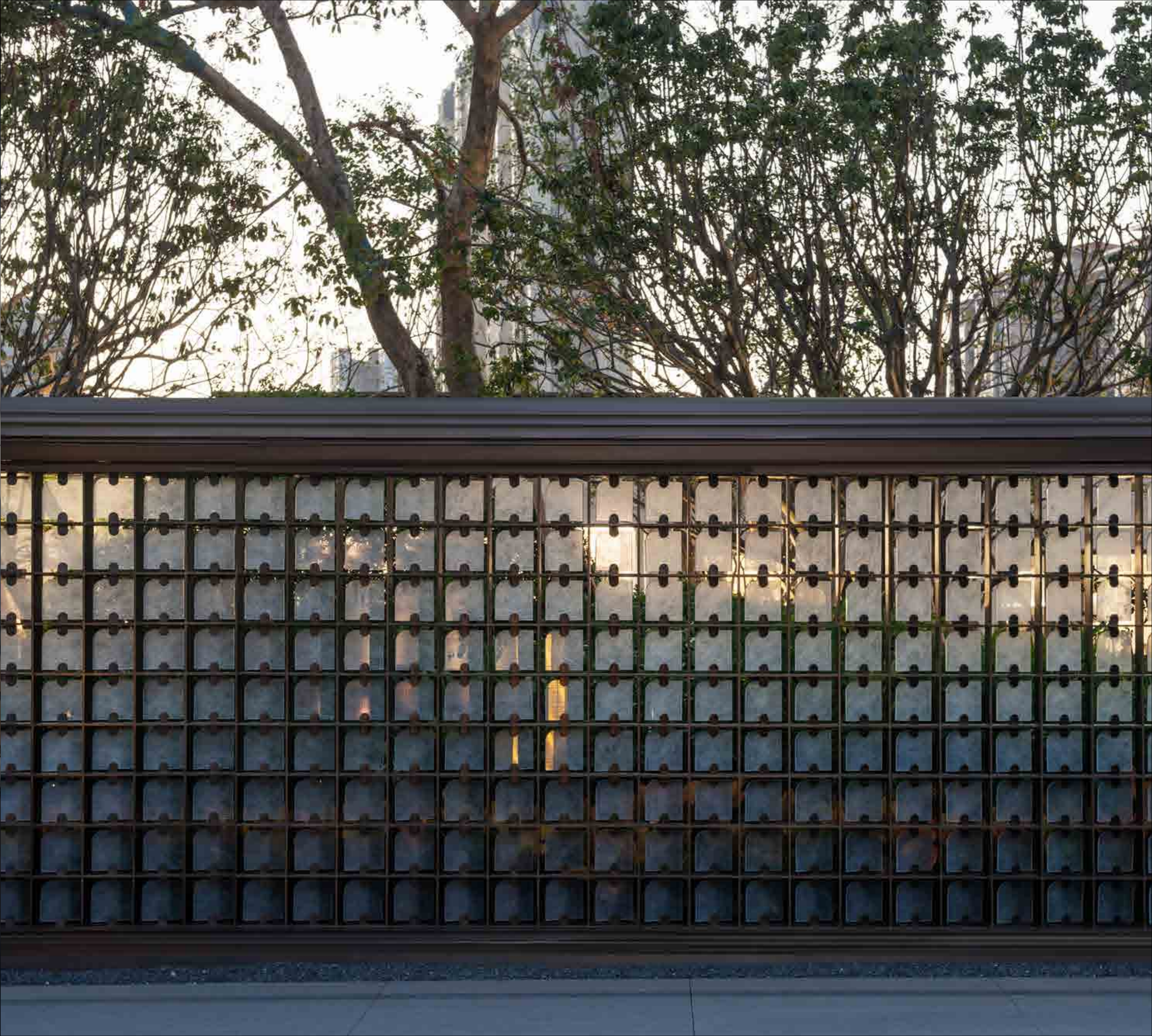
POLY-TIANHUAN GARDEN LANDSCAPE DESIGN

I A P A P T Y L T D

2020 Silver Award of A'design Awards

As the starting point of the entire project, the first development area of Tianhuan Garden was designed with the aim of distinguishing the project from the surrounding environment in terms of spatial temperament and form. The design concept is "green hills in the city", emphasizing a multi-dimensional landscape system and vertical changes. The undulating green hills and unified curved landscape construction form a staggered walking experience, forming a fun carrier for outdoor community life.

Project owner: Foshan Poly Shunyuan Real Estate Co., Ltd
Project scale: Landscape design area of about 67000 sqm
Project location: Foshan, Guangdong province, China
Project Status : Completed construction.



VANKE SEA MOON PROJECT DISPLAY CENTER INTERIOR DESIGN

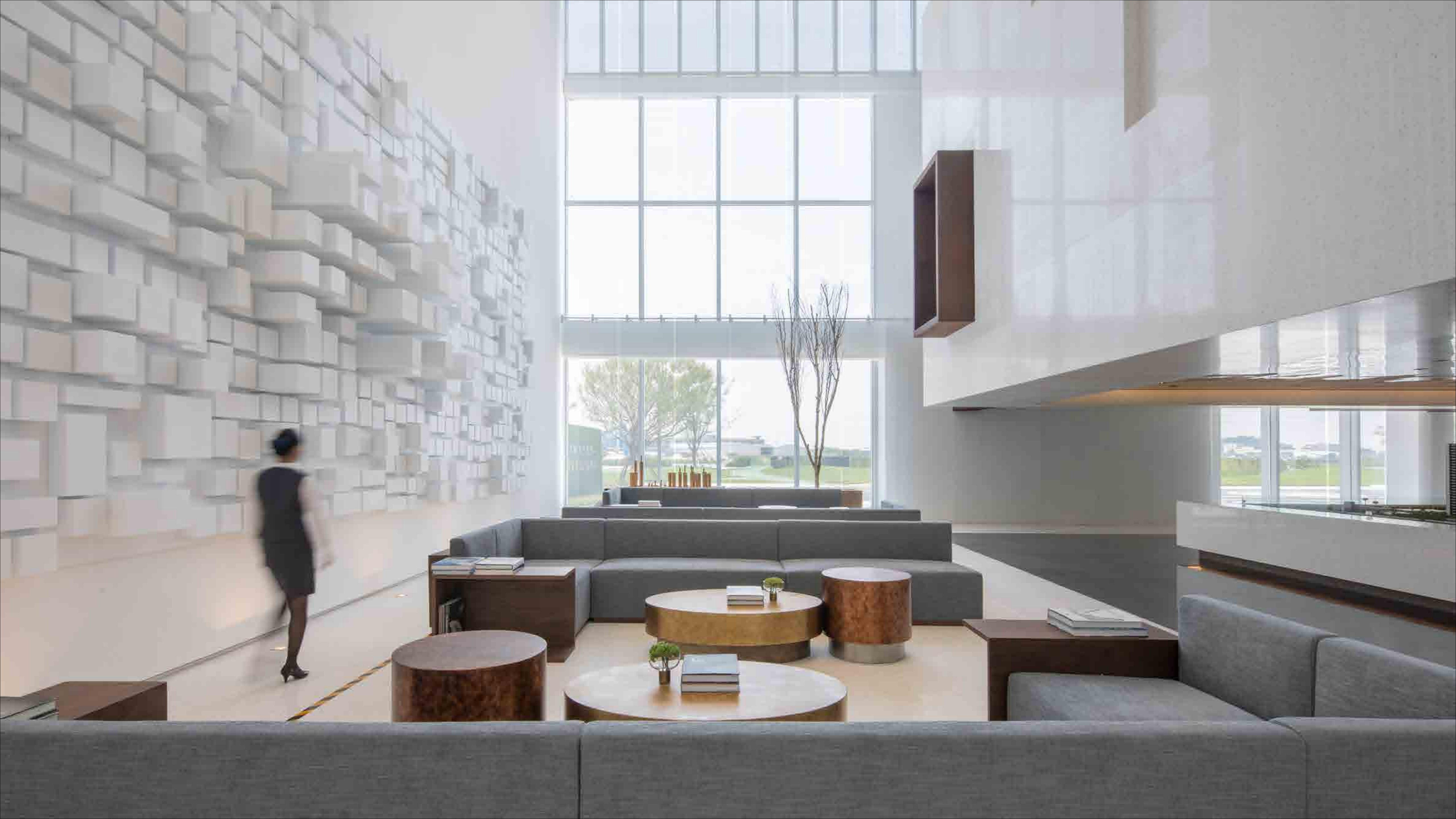
I A P A P T Y L T D

2020 ICONIC Design Awards Winner

2020 Gold Award of A' Design Awards

This project is like a "container" that carries not only the design style but also people's aspirations for life, filled with curiosity and the unknown. The various spaces are connected through the integration of furniture and staircase design using copper-colored rusted steel panels, creating a continuous visual flow from the reception desk at the entrance to the zigzag staircase, resembling a sculptural space. The pure smoothness of white terrazzo contrasts strongly with the bold and expressive nature of the copper-colored rusted steel panels, infusing the space with tension and a sense of drama.

Project owner: Guangzhou Vanke Real Estate Co., LTD
Project scale: The interior design area is about 1818 sqm
Project location: Guangzhou, Guangdong province, China
Project Status : Complete construction.



FOSHAN LISHUI DONGYUE BAY SALES CENTER

I A P A P T Y L T D

2022 ELA International Landscape Award Silver Award

2022 MUSE Design Award Gold Award

2021 Excellence Award AHFA Awards

Project owner: Foshan Nanhai Meijing Real Estate Development Co., Ltd. (Midea Group)
Project scale: Interior Area 1,000 m²
Project location: Foshan, Guangdong province, China
Project Status : Completed construction.





ZHONGNAN SOUTHERN SHORE MANSION

I A P A P T Y L T D

After understanding the local characteristics of Guizhou and the project's positioning and scale, the initial concept for the spatial design began to take shape. Considering the landscape interface, we comprehensively addressed the functional zoning, design forms, and styles of the interior to determine the spatial layout. We carefully examined the relationships between functions and spaces, such as ensuring visibility between spaces without interference and incorporating design elements that create points of memory within the space. Specific design techniques (such as borrowing scenery, emphasizing suitability as beauty, and simplifying complexity) were applied to the space. Following an in-depth study of material language and characteristics, we selected primary materials that align with the spatial attributes.

Project owner: Guizhou Jinsheng Real Estate Co., Ltd.
Project scale: Interior Area 1,818 m²
Project location: Guiyang, Guizhou province, China
Project Status : Completed construction.

POLY QINGYUAN TIANHUI VILL INTERIOR DESIGN

I A P A P T Y L T D

This project is positioned as a furniture design studio, where the design works are used as display elements within the space. The design integrates display functions and presents them harmoniously within the space, with a minimalist backdrop that enhances the presentation of the furniture displays.

The building consists of five levels, and in this project, a geometric zigzag staircase runs through them. The staircase's design is simple yet emphasizes the limitations of its functional use. In the minimalist space, the staircase is treated in a subtractive manner, simplifying its composition to create a more modern and intriguing appearance. By employing this design approach, the staircase becomes a focal point that adds a touch of contemporary style and amusement to the space.

Project owner: Qingyuan Xinrui Real Estate Co., LTD. (Poly Group)
Project scale: Interior design area 1800 square meters
Project location: Qingyuan, Guangdong province, China
Project Status: Complete construction.





SHANWEI POLY GOLDEN BAY VILLA INTERIOR DESIGN

I A P A P T Y L T D

The interior design of the Poly Shanwei Golden Bay Villa Resort Hotel has a construction area of approximately 1,200 m². The design scheme emphasizes a rustic and elegant aesthetic that draws on Zen philosophy, culture, and nature. A dry landscape installation is incorporated into the space, expressing the concept of "observing humanity and transforming through nature" with a refined and understated beauty, and a calm and peaceful demeanor.



Project owner: Shanwei Poly Real Estate Development Co.Ltd.
Project scale: Interior Design Area Approximately 600 m²
Project location: Shanwei, Guangdong province, China
Project Status : Completed construction.



POLY XINGHAI TOWN INNOVATIVE HOUSE TYPE INTERIOR DESIGN

I A P A P T Y L T D

The design attempts to break the traditional home model, using industrialized elements such as concrete frames and steel ladder structures, integrated furniture, and a simple overall restaurant design, striving for an innovative villa residential design. The creative design of the workbench and staircase is like an artistic installation of staircase design, with a free and multifunctional spatial combination. Tatami style bedroom - integrated design of resting space and reading space.

Project owner: Guangdong Poly Real Estate Development Co., Ltd.
Project scale: 200 m²
Project location: Guangzhou, Guangdong province, China
Project Status : Completed construction.





ZHUHAI JINWAN WEST LAKE WETLAND GARDEN INTERIOR DESIGN

I A P A P T Y L T D

The architectural design has divided the space into independent areas, but the design hopes that the spatial interface will be ambiguous and unclear, which will make the space more interesting. Treating the ceiling, walls, and floors as a whole, and then using coherent materials to blur the field, is like extending the material of the living room floor all the way to the dining room and multi-purpose room, coupled with the penetration of wall and wooden grid materials, reducing the sense of independence of the entire space.



Project owner: Poly Yuedong Real Estate Development Co., Ltd
Project scale: Interior design area of approximately 700 sqm
Project location: Zhuhai City, Guangdong Province, China
Project Status : Construction completed



ZHUHAI LOVE POST OFFICE INTERIOR DESIGN

I A P A P T Y L T D

The Love Post Office faces the sea, with the sound of waves echoing around it. The interior space design feels as if it has been washed by the ocean waves, symbolizing the passage of time and leaving behind only— the proof of love.

Commemoration of Love

The Love Post Office plays an indispensable role in the cultural development of Lover's Road, while also situated in the "City Living Room." To some extent, it carries the responsibility of showcasing Zhuhai's tourism culture and promoting the city's image. The urban gift series titled "Zhuhai Edition," featuring primarily Zhuhai elements, includes over 200 product styles. This series fully demonstrates the essence and depth of the city, conveying a sense of happiness and pride of being a Zhuhai resident to more visitors through these products.

Project owner: Zhuhai Zhengfang Seaside Swimming Pool Management Services Co., Ltd.

Project scale: Interior Design Area Approximately 600 m²

Project location: Zhuhai, Guangdong province, China

Project Status : Completed construction.

THANK YOU



W E B S I T E : W W W . I A P A . N E T . A U