

# ECURS



Everybody Can Use Remote Sensing

# ECURS FeatureAI

Introducing the New Era of Remote Sensing,  
Where Artificial Intelligence Creates Limitless Possibilities.





With **ECURS FeatureAI**, you can **Detect** and **Extract** easily



Buildings



Linear Features  
(e.g. Roads)



Green Houses



Solar Panels



Oil Tanks



Aircrafts



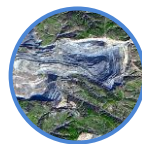
Ships and Vessels



Windmills



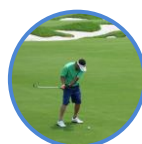
Tailing Ponds



Open pit-Mines

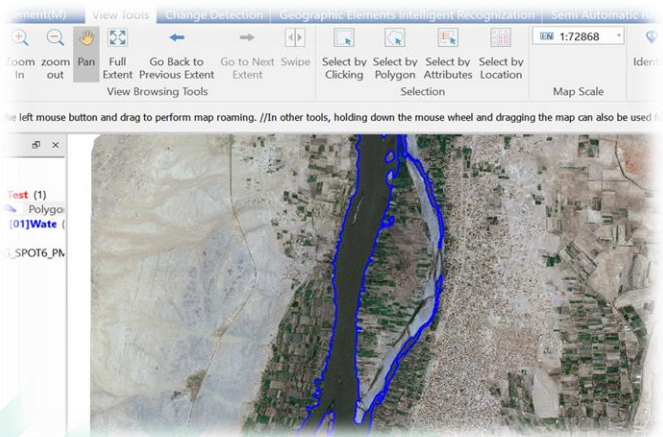


Water Bodies



Golf Courses

- Accelerate geospatial analysis process by unlocking the potential of **automated** and **semi-automated feature extraction**! Empowered by AI and deep learning, ECURS FeatureAI simplifies the extraction of specific features at precise locations, saving time and effort required for traditional means in digitization and feature extraction.



- ECURS FeatureAI also provides an automated and scalable approach for **change detection** and **land use land cover classification**, which is applicable to various sectors e.g., agriculture, mining, ecology, urban planning, forestry, and many other fields.



Roof Extraction



Solar Panels Extraction



Palm Trees Extraction