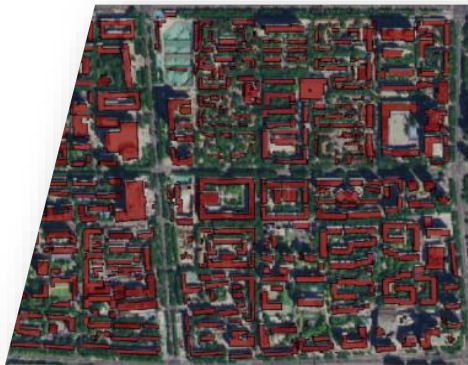


# ECURS



Everybody Can Use Remote Sensing



Our comprehensive suite of services covers the entire geospatial spectrum:

- Supply earth observation (EO) satellite imagery via archive and tasking.
- Processing and delivery of value-added geospatial products (e.g., basemap, Digital Elevation Models / DEM, Digital Surface Models / DSM, and image analytics).
- Construction of Digital Twin cities & 3D models.
- GIS software package with cutting-edge tools, ECURSuite.
- Innovative geospatial solutions for all industries and applications.

At ECURS, commitment to excellence is our priority. We deliver quality products and services to our customers, connecting them with the latest tools and data they need to thrive in a globalising world.







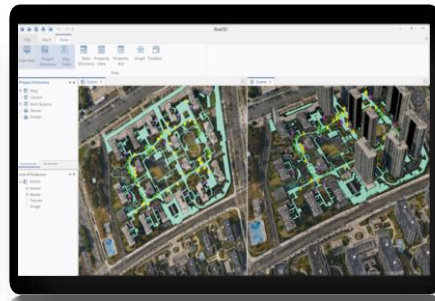
## **ECURS ImagePro**

ECURS ImagePro is built for the efficient generation of orthorectified mosaic basemaps, DEMs and DSMs. The system also supports batch processing and high-resolution imagery from various sources, such as aerial sensors and satellites.



## **ECURS 3DPro**

With multiple data processing and rendering technologies combined, ECURS 3DPro allows users to achieve smooth construction of 2D & 3D integrated scenes, multi-dimensional spatial analysis, and service sharing. It includes multi-source data fusion, data governance, 2D & 3D data integration, semantization of complex 3D scenes, monomer management, and data lightweight.



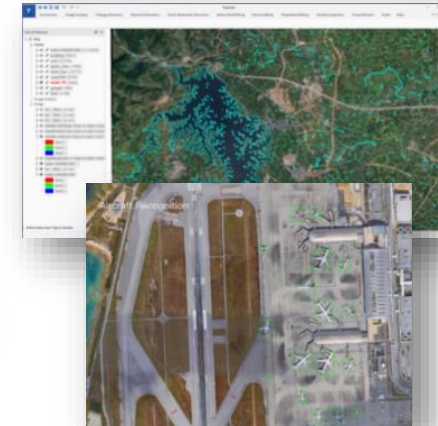
## **ECURS MapPro**

The ECURS MapPro software focuses on map production efficiency and quality through using integrated data storage models and cartographic rules. The system supports multi-spatial data conversion (format, projection, etc.), editing (geometry, topology, etc.) and data management.



## **ECURS FeatureAI**

Utilizing object-oriented analysis and deep learning technologies, this solution incorporates a multi-scale image analysis model using automated workflow. It effectively addresses tasks such as feature recognition, image classification, and change detection, among other applications.



## **EO Satellite Imagery**

We provide **EO Satellite Imagery** (Optical & Radar) at **various spatial resolutions** (30cm - 50cm) and **spectral band combinations** (hyperspectral & SWIR) which could be tailored to meet the diverse application needs of our customers.

